



AMERICAN SCHOOL TEGUCIGALPA

EVERY
EAGLE
MATTERS EVERY
MOMENT
COUNTS

☎ (504) 2276-8400 Fax: (504) 2239-8558 US #: (305) 396-4042
✉ info@amschool.org 🌐 www.amschool.org

**2024-2025
HIGH SCHOOL
PROFILE**

**IB: 1102
CEEB CODE: 862300**

WELCOME TO AST

The American School of Tegucigalpa offers three different diplomas: the Honduran Bachillerato, the High School Diploma and the International Baccalaureate Diploma. AST has been a Cognia accredited school since 1962, reinforcing our great standards and quality education. The Honduran Ministry of Education grants the national degree of Bachillerato to students who comply with additional credits and 160 hours of community service. The school year consists of 182 days divided into 2 semesters. The first semester begins in August and the second semester in January. Grades are issued quarterly. The school day begins at 7:30 a.m. and ends at 2:30 p.m.

VISION

To be the premier educational institution in the region that prepares environmentally and socially responsible leaders, innovators and lifelong learners.

MISSION

The American School is a student-centered, college preparatory institution fostering globally responsible citizens and leaders offering a comprehensive, rigorous, international education promoting core values in a safe, innovative, and collaborative environment.



Class of 2025

82



HS Enrollment
2024 (9 -12)

324



HS Students School
Nationalities

10



HS Teachers
with
Master's Degree

74%



Average Class Size

20



Teacher/Student
Ratio

1:20 MS/HS

LEADERSHIP

Superintendent
Ms. Liliana Jenkins

High School Principal
Mr. Blake Swanson

Assistant Principal
Mr. Roque Padilla

**IB Program and
Student Services
Coordinator**
Mr. Daniel Dobbe

HS College Counselor
Ms. Yolanda Avilés

HS Counselor
Ms. Elizabeth Hernández

ACCREDITATION & MEMBERSHIPS

Honduran Ministry of Education
Secretaría de Educación
de Honduras

Cognia

IBO
International Baccalaureate
Organization

International ACAC
International Association for
College Admission Counseling

AASCA
Association of American Schools
of Central America

Tri-Association
The Association of American Schools
of Central America, Colombia,
Caribbean and Mexico

AMISA
American International Schools in
the Americas

AAIE
Association for the Advancement of
International Education

ABSH
Association of Bilingual Schools
of Honduras

ACADEMIC PROGRAM

73% of the senior class is enrolled in all three diplomas and/or certificates offered: the Honduran Bachillerato, High School and the International Baccalaureate Diploma. IB Certificates are earned by students who choose to take up to five IB courses. AST uses the Bridge U platform to support our students' career pathways and application process. Parchment service is used for reporting official documents to universities not listed in the common application.

CO-CURRICULAR OFFERINGS

AST has an extensive co-curricular program for high school students, based around clubs. Sports are offered in Junior Varsity and Varsity athletic teams that have the opportunity for competition and formative sports program in Track & Field, Basketball, Soccer and Volleyball during entire school year and summer as co-curricular activity. Students collaborate in fundraising activities to sponsor 12 community service organizations. Our students join clubs that are linked to international conferences and tournaments as Honors Band, Model United Nations (MUN), National Honor Society, Robotics, Operation Smile, TedEd Club, Global Issue Network (GIN), Global Vision International (GVI), STEAM and Knowledge Bowl.

GRADUATION SERVICE REQUIREMENTS

A Service Learning requirement serves to instill all Bachillerato students with a sense of community and understanding of our responsibilities as global citizens. Service experiences should be meaningful, authentic and provide opportunities for learning. Students document their ongoing commitment to service with reflections posted in the CAS portfolio, and a final thesis for the Honduran Ministry of Education.

SAT MEAN SCORES 2023-2024 (12TH GRADE STUDENTS)

	TOTAL SCORE	ERW	MATH
MEAN SCORE	1200	612	579
HIGHEST SCORE	1480	800	780
LOWEST SCORE	850	450	270

VALUES AND ATTRIBUTES

RESPONSIBILITY	RISK-TAKERS
LOYALTY	KNOWLEDGEABLE
RESPECT	COMMUNICATORS
GRATITUDE	CARING
GENEROSITY	THINKERS
PERSEVERANCE	INQUIRERS
FAIRNESS	OPEN-MINDED
DISCIPLINE	BALANCED
HONESTY	PRINCIPLED
PATIENCE	REFLECTIVE

COURSE OFFERINGS 2024-2025

Creative Arts

Media Art 9, 10
Art Studio 9, 10
Band 9, 10
Choir 9, 10
IB Visual Arts (SL)
Music/Guitar 9, 10

Design Innovation

Capstone Project
Computer Science
PLTW Computer Science Principles
PLTW Intro To Engineering and Design
PLTW Principles Of Engineering
Yearbook Skills

Honduran Studies

Civics 9
History Of Honduras 10

Languages

English
IB English (HL)
IB French Ab Initio I, II (SL)
IB French B (HL)
IB Spanish (HL)
IB Spanish Ab Initio SL Y1, Y2
IB Spanish B
Spanish
SSL_Level_1-5

Learning Support

Student Services

Mathematics

Algebra II
IB Math Analysis & Interpretations
IB Math Applications
Integrated Mathematics
Math Applications

Physical Education

Fitness
Health
Physical Education 9, 10
Project Leave The Nest 9, 10

Science

Biology
Chemistry
Honors Biology
IB Biology (SL) (HL)
IB Chemistry (SL)
Integrated Science
IB Physics SL
Physics

Social Studies

Economics
History of the Americas
IB Business Management (HL)
Business Management (HL)
IB History of the Americas (HL)
IB Psychology (SL)
Psychology I, II
Research Methods
Theory Of Knowledge
World Civilization I, II

GRADING SCALE AND DISTRIBUTION

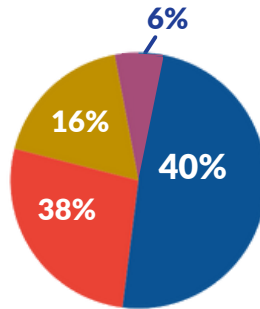
CLASS OF 2024 PERCENTAGE OF TOTAL

A (93-100)

B (85-92)

C (78-84)

D (70-77)



IB ACCESS

- Students must meet academic requirements to get fully enrolled in the IB Diploma Program. Most courses require a minimum of 90% average.
- HL Languages request a portfolio with the compilation of top assignments graded in their 9th and 10th grades.
- Specific requirements include a statement of interest for IB Business due to limited spaces.
- Previous course work is necessary for enrollment in Math and Science IB SL and HL courses.
- IB Math Application and IB Math Analysis require a teacher recommendation as well as MAP scores.
- IB Visual Arts requires students to exceed proficiency in an assigned art work.
- Students can take only one of the following courses due to scheduling conflicts: French SL, Chemistry SL, Psychology SL, or Art SL. Students can take both Psychology SL and Chemistry SL.

GRADUATION CREDIT REQUIREMENTS

Subject	US Program (9th-12th)	Honduran Program (7th-12th)
English	4.0	6.0
Math	3.0	6.0
Science	3.0	6.0
Spanish	2.0	5.0
PE/Health	2.0	5.0
Fine Arts	2.0	3.0
Electives	4.0	11.0
Social Studies	4.0	9.0



95%

of all IB students scored a 3 or higher for their final IB mark

54%

of the IB Full Diploma Candidates earned the IB Diploma

89%

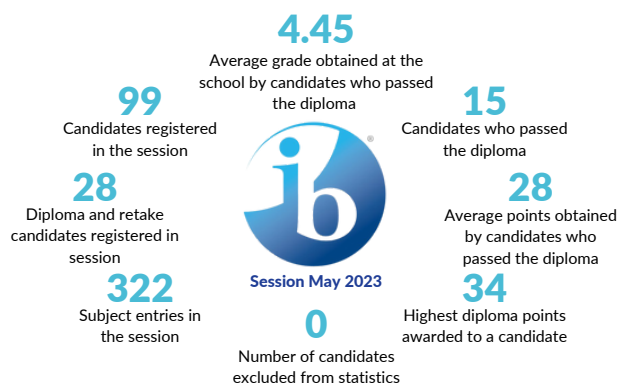
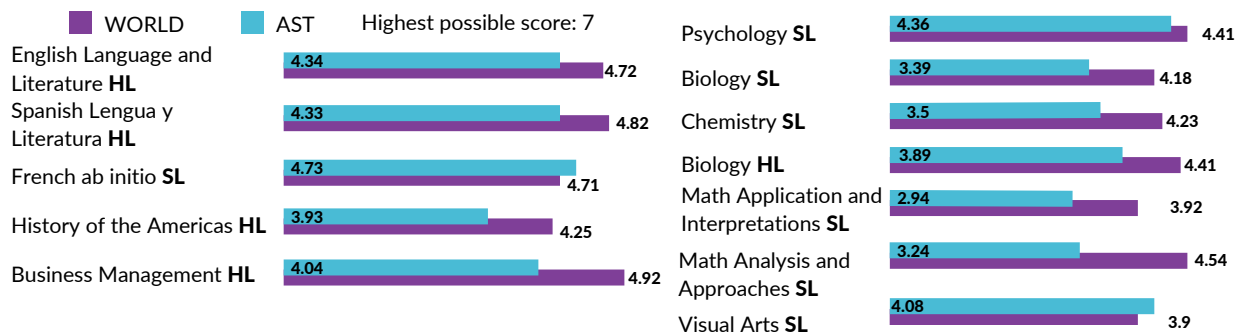
of the 2024 senior class took at least one IB course

70%

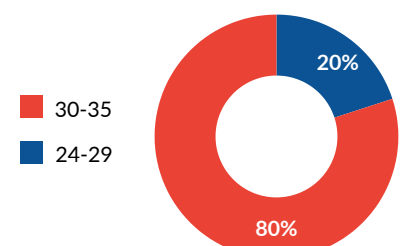
of the 2024 senior class took 3 or more IB courses

2024 AVERAGE INTERNATIONAL BACCALAUREATE (IB) SCORES BY SUBJECT

- 98% of AST IB Full Diploma Candidates earned the IB Bi-lingual Diploma; the world average was 32%.
- 54% of AST students were IB Full Diploma Candidates; the world-wide average in IB schools was 30%.
- 98% of AST's IB Full Diploma Candidates earned three different Diplomas, 85% of AST's students took 3 or more IB courses.



TOTAL POINTS EARNED BY CANDIDATES



UNIVERSITY ACCEPTANCES & MATRICULATION 2021-2024

ASIA

National Dong Hwa University (1)
Shenzhen University (1)

CANADA



Alberta University of the Arts
Calgary University
Capilano University (1)
Carleton University
Concordia University (3)
Dalhousie University
Douglas College
McMaster University
Memorial University
Seneca College (1)
University of Alberta
University of Calgary
University of New Brunswick
University of Ottawa
University of Victoria (1)
York University
Wilfrid Laurier University
University of Toronto (3)

EUROPE

Durham University
Instituto Marangoni Paris (1)
Kings College London
Queen Mary University of London
Tecnun-Escuela de Ingeniería, Universidad de Navarra (1)
Universidad Católica de Murcia
University of Bath
University of Edinburgh
University of Liverpool
University of Twente (1)
Alpha Aktiv Private Education Institute (1)
Constructor University
Eindhoven University of Technology
ESADE Business School (1)
Escuela Superior de Diseño ESDI
EU Business School
IE University (2)
Instituto Católico de Administración y Dirección de Empresas
London Metropolitan University
NABA Nuova Accademia di Belle Arti (1)
Saint Louis University Madrid (1)
Toulouse Business School
Universidad CEU Abat Oliba
Universidad CEU Cardenal Herrera (2)
Universidad CEU Valencia (3)
Universidad de Carlos III Madrid
Universidad de Navarra (9)
Universidad Europea de Madrid (4)
Universidad Francisco Vitoria
Università Cattolica del Sacro Cuore- Milan
University of Amsterdam
University of Birmingham (1)
University of Europe for Applied Sciences

University of Kent
University of Leeds (2)
University of Manchester
University of Westminster
Trinity College Dublin
Escuela de Medicina y Cirugía Veterinaria San Francisco de Asis (1)

LATIN AMERICA

Tecnológico de Monterrey (15)
Texas Tech Costa Rica
Universidad Anahuac Cancun (2)
Universidad Argentina de la Empresa (1)
Universidad Católica de Honduras (1)
Universidad de Buenos Aires (1)
Universidad de Guatemala del Valle
Universidad de Monterrey (4)
Universidad Nacional Autónoma de Honduras (1)
Universidad Tecnológica Centroamericana (15)

UNITED STATES



DePaul University (2)
Abilene Christian University (1)
American University (1)
Arizona State University
Assumption University
Auburn University
Austin Community College
Babson College
Barnard University
Barry University
Baylor University (2)
Belmont University
Bentley University (5)
Berkley University
Bluefield State University
Bocconi University
Boston College (2)
Bradley University
Brandeis University
Brigham Young University (1)
Brigham Young University-Idaho
Carolina University (1)
Case Western Reserve University
Catholic University of America
Clark University
Cleveland Institute of Art
Clemson University
College of DuPage (1)
College of William and Mary
Columbia College Chicago
Cornell University
Creighton University
Drexel University (1)
Duke University (3)
Elon University
Emerson College
Emmanuel College
Emmanuel University
Emory University (1)
Florida Atlantic University (1)
Florida Institute of Technology
Florida International University
Florida State University
Florida Tech University
Fordham University
Fort Lewis College

Gannon University (2)
George Mason University
George Washington University (1)
Georgia Gwinnett College
Georgia Institute of Technology
Georgia Southern University
Georgia State University
Georgia Tech University (2)
Hampton University (1)
Hofstra University
Houston Baptist University
Hult International Business School (1)
Illinois Institute of Technology
Imperial College
Indiana University Bloomington
Iowa State University
Jacksonville University
John Cabot University
John Carroll University
Johnson & Wales University
Kansas State University
Knox College (1)
Lehigh University
Lesley University
LIM College
Louisiana State University (1)
Loyola University Chicago
Loyola University Marymount
Loyola University New Orleans
Lynn University (1)
Lyon College
Marian University
Marquette University
Maryland University
Marymount University
Massachusetts College of Art & Design
McMurry University
Mercer University (1)
Mercy University
Mercyhurst University
Michigan State University (2)
Monmouth University
Mount Aloysius College
New Haven University
New York Institute of Technology
New York University (2)
North Carolina State University
North Carolina State University Raleigh
North Georgia University
Northeastern University (1)
Northwestern University
Nova Southeastern University (1)
Otis College of Art and Design
Pace University
Parson University
Pennsylvania State University (2)
Pratt Institute
Providence College
Purdue University (14)
Purdue West Lafayette
Rensselaer Polytechnic Institute
Rice University (1)
Ringling College of Art and Design
Rochester Institute of Technology
Rollins College (1)
Rutgers University
Ryerson University
Saint Leo University
St. Mary's University of Minnesota
Salem University
Santa Clara University
Santa Fe Community College (1)
Savannah College of Art and Design(1)

Seattle Pacific University
Seton Hall University
Simon Fraser University
South Plain College
Southern Methodist University (6)
St. Edward's University (4)
St. Johns University
St. Mary's University (4)
St. Thomas University
Stanford University (1)
Stevens Institute of Technology
Stony Brook University
Suffolk University (1)
Syracuse University
Texas A&M University
Texas Christian University (3)
Texas Tech University
Thomson Rivers University
Tilburg University (1)
Trinity University (1)
Tufts University
Tulane University (1)
Tulsa University
University of Miami
University at Buffalo (1)
University at Buffalo SUNY
University of Massachusetts Boston
University of Alabama (1)
University of Arizona
University of British Columbia
University of California-San Diego
University of California-Santa Barbara
University of California-Santa Cruz
University of Central Florida
University of Chapel Hill
University of Cincinnati
University of Colorado Colorado Springs(1)
University of Denver
University of Florida
University of Georgia (1)
University of Houston (1)
University of Illinois at Chicago (1)
University of Illinois Urbana-Champaign
University of Kansas
University of Kentucky
University of Louisville
University of Loyola Chicago
University of Loyola New Orleans
University of Maryland
University of Massachusetts-Boston
University of Maryland
University of Miami (2)
University of Michigan (2)
University of Michigan Ann Arbor (2)
University of Michigan-Dearborn
University of Michigan-Flint
University of North Carolina at Chapel Hill
University of North Carolina at Charlotte
University of North Texas
University of Notre Dame (10)
University of Pennsylvania (2)
University of Pittsburgh
University of San Francisco
University of South Florida (2)
University of Southampton
University of Southern California
University of St. Thomas

University of Tampa
University of Tennessee
University of Texas at Arlington
University of Texas at Austin
University of Texas at Dallas
University of Texas at San Antonio (1)
University of the Incarnate Word (1)
University of Toronto
University of Utah
University of Washington Seattle
University of Wisconsin Madison
Valparaiso University
Villanova University
Virginia Commonwealth University
Virginia Tech University
Wake Forest University (2)
Washington State University
Wentworth Institute of Technology
Western Carolina University
Western University
Worcester Polytechnic Institute (1)
Yale University

KEY

Listed = Acceptances
Bold Type = Matriculation
2024
() = Number of Students
Matriculated

2024 UNIVERSITY MATRICULATION

Asia	1%
Europe	9%
Latin America	28%
USA	62%